

# Vibiemme's

## Domobar Super Review

Just like all the staff at ECA, I spend a lot of my time drinking coffee and giving my opinion on everything. Now with the combination of my passion and hobby I would like to take you through the newly arrived DOMOBAR Super by Vibiemme, and introduce the specifications that make this semi commercial espresso machine a great home unit for the coffee enthusiast.



The DOMOBAR indicates its intention by name as the espresso machine for home, HOMEBAR. It was the first domestic machine to provide the coffee enthusiast with commercial performance in the comfort of the home and was developed from the result of using a small test model espresso machine in the E61 group head testing.

Created in 1983, the same year Giovanni Vigliotto went on trial for multiple counts of bigamy involving 105 women.

Historically, Vibiemme stake their claim to fame through the exploits of Mr Carlo Valente. As founder of both Faema and Vibiemme espresso machine companies, he has left a prestigious legacy as continued by the passionate Mr Cristiano Osnato, now head of Vibiemme, Milano. Mr Valente introduced the revolutionary water charge-infusion-discharge E61 group head back in 1961 the year of the solar Eclipse. This styling of group head not only remains a Patent held by Vibiemme today, but also is one of the most commonly used group heads by leading espresso machine manufacturers around the world. It is user friendly with excellent heat characteristics resulting in superb quality espresso.

For those out there who judge the book by its cover I would like to start by stating you guys are shallow! However, we do cater for all. The Super comes in sexy and super sexy, and is degree qualified. Fine linear lines with functional design;

- Dual system pressure gauges
- User handles are placed on the ample sized drip and cup trays.
- Solid chromed metal feet with bottom rubber stoppers.
- Exterior AISI 304BA stainless steel panels or with mild metal gloss black side and back panel.
- Electronica version with four programmable portion control buttons and one manual button.

... Nice.



And for all of you who questioned the government as children...

- 2.7 litre copper and brass boiler
- Parker commercial pressure stat
- ½-inch Ø group pipes.
- Pump regulatory bleed valve
- Three position barrel power switch.

Open aperture links commercial pressure stat with adjustment screw... changing boiler pressure is child's play.

Dual clocks... Local and Italian time zone standard. Alternatively, pressure gauges can be a great guide to a machine's performance parameters.



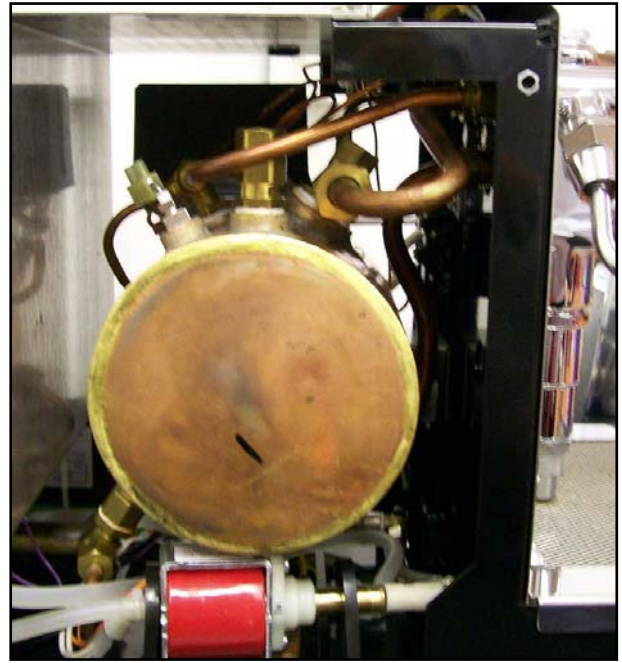
Three indicator lights. The orange light by the boiler gauge illuminates when element is active and heating. The light on the left side of the brew pressure gauge is for low water reservoir and green on the right side indicates power.

No, the boiler could not possibly be any bigger. Does Pamela Anderson come to mind or Tommy Lee?

Chris Gleeson says, "Check out those ½-inch group pipes, no more need to be embarrassed and avoid communal showers."

Boiler safeties and protection include

- Thermal cut off switch
- Water level probe
- Over pressure safety valve
- Anti vacuum valve
- Non return valve in steam valve assembly



She was the first professional in the kitchen .... VBM's patent on the E61 group head is still current to date. It is **bigger** than the usual, has great thermal stability at the head and is producing some complex flavour profiles down in the lab.

The Over Pressure Valve adjustment screw is a great aid to adjust and regulate group extraction pressure over time. Excessive pressure is leaked back into the water reservoir.







The little steam engine that could! Especially when all that steam volume from a 2.7 litre boiler is driven through a chromed brass wand with two hole tip on a 360° ball joint. The steam valve assembly is ½-turn open / closed operation with a fitted non – return spring and ball.

Steam recovery? 1800 watt element .... elementary.

Council approval required for the filling of any new pools, spa **and** DOMOBAR 4 litre water tanks. Safety micro switch system on later is included.



Two Portafilter handles with 8 and 16 gram basket, blind filter and group brush standard inclusions.

When taking the photo Chris Gleeson was as naked as the day he was born... I felt a little uncomfortable as I modeled. Great fingers.



*Vibiemme*  
Sistemi per caffè espresso

**DOMO**<sup>SUPER</sup>  
BAR

DOMOBAR Super: There is a party in my mouth and you are invited to it!

VBM available from leading coffee roasters and coffee specialty stores.

Are you on the list?

Not available from the Men's Gallery, although you can always check in.

Thank you for taking the time to read this review.  
Salvatore Savarino © July 2007